



ToooAir PTT Radio

PUSH-TO-TALK

TA-388

1.44 TFT display with 128x128 pixels and 65K colours

9 keys on front, 3 keys on side, easy operation

Keys can be programmed with different functions

Instant private calling can be set

Dispatching Console Information display

LED flashlight

Extended talk time with large capacity battery

GPS function (optional)

ToooAir

Background

PTToC Push-to-Talk over Cellular (PoC) is a technology offering VoIP two-way radio communication over a Wide Area utilising the cellular phone data networks.

The advantages of the TooAir TA-388 radio system is that two-way radio communication can simply be deployed in a local area for example a single site or Australia wide requiring communication from Melbourne to Cairns and everything in between with no change in cost or infrastructure.

TooAir is simply an Australia wide, One-to-One or One-to-Many two-way radio system utilising the cellular mobile phone network similar to a Wide Area multi-site Trunking system.

Due to the use of cellular multi-site technology, in-building coverage is superior to most conventional LMR/PMR radio networks and offers in tunnel and basement communication.



Features

Private calls

Private calls can be made by choosing the required radio ID.

Voice recording

All communication is recorded on the platform and available for instant reply.

Global Positioning System

The TA-388 offers GPS tracking via the dispatch station software, showing speed, distance travelled and time.

Dispatcher

The platform offers dispatcher software that allows the customer to be in control of their own network.

Group calls

Group calls can be made by choosing the required radio IDs.

Send messages

The operator can send instant voice and text messages to a radio. All sent messages are recorded on the server.

Unlimited coverage

Utilising existing GSM networks, the TA-388 offers wide area coverage.

In building reception

Utilising GSM, the spectrum allows for enhanced reception.

Stun function

The operator can stun a radio should the radio be stolen or abused. The radio can be reactivated by the controller.

Users



Transportation Courier • Taxi • Limo Service
• Tow truck • Railway • Airport • Seaport
• Light rail • MRT • Logistics



Security & Services Hotel • Condo • Offices
• Factory • Sports events • Education • Fire Service



Manufacturing Factory • Warehousing
• Light industry



Construction Site • Cement delivery
• Electrical • Excavating • Plumbing • Roofing



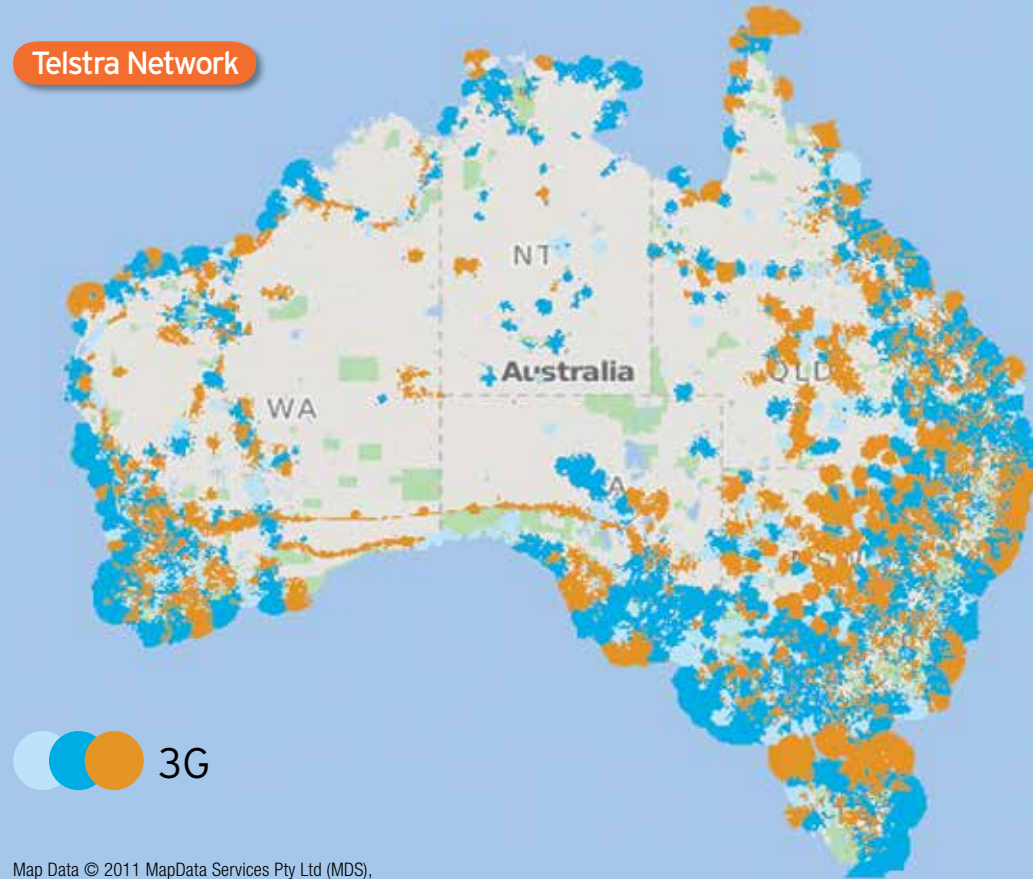
Hospitality Restaurant • Hotel
• Resort • Shopping mall • Supermarket



Agriculture Rural Community • Farmers

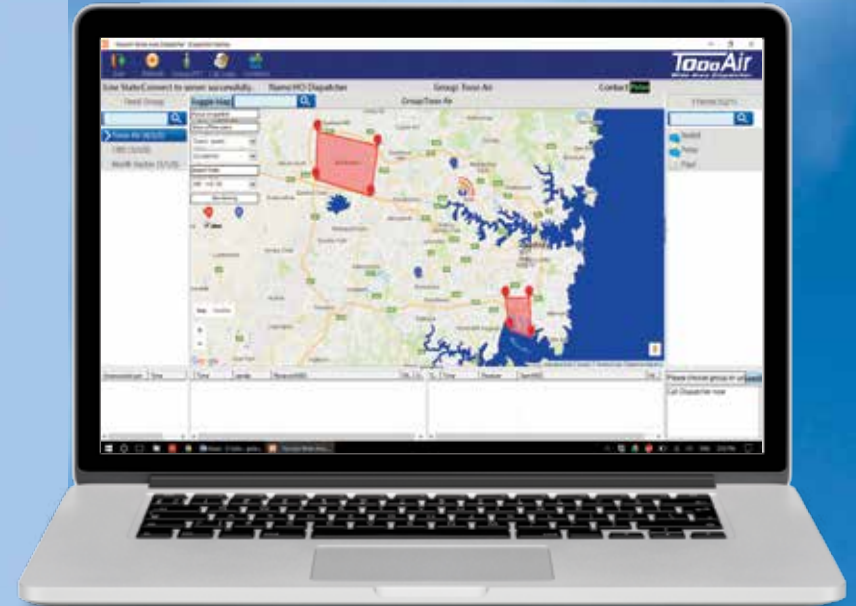
Australia wide area coverage

Telstra Network



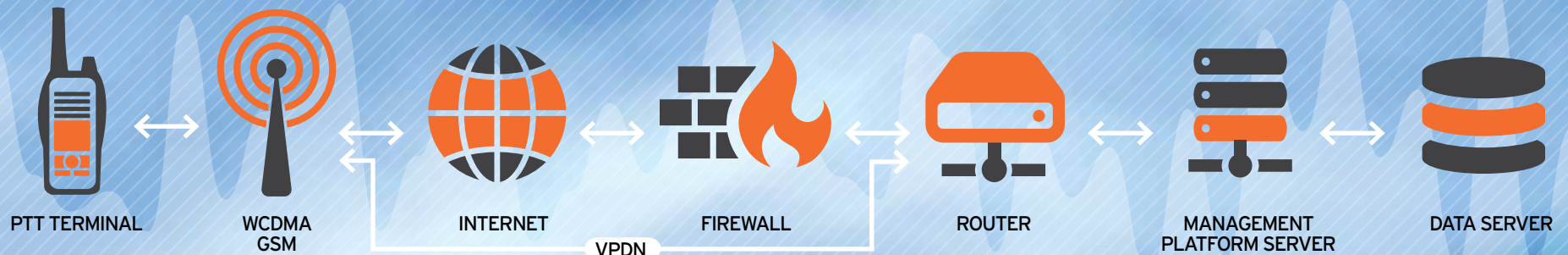
Map Data © 2011 MapData Services Pty Ltd (MDS),
PSMA <https://www.telstra.com.au/coverage-networks/our-coverage>

Dispatcher software



The user interface of the TooAir-PTT graphic dispatch software enables quick and easy access and visibility to all users in your fleet. Call set-up to single individual users, pre-defined groups and dynamic groups is easily configured using the GUI of the dispatcher software. GPS tracking, Text messaging, Radio Stun, Geo Fencing, Dynamic group allocation and Voice record are just some of the features offered with the TooAir PTT dispatcher system.

Network Topology

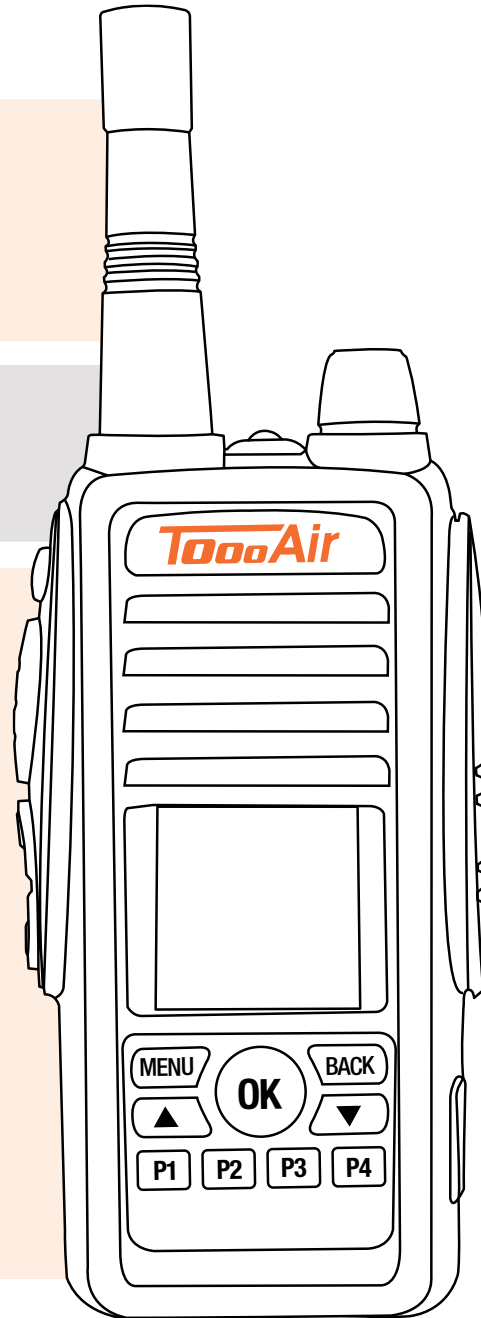


Specifications

Model Number: TA-388
Dimensions: 120mm x 60mm x 40mm
Weight: 268g
Working temp: -30°C to +75°C

Working voltage: 3.3v ~ 4.2v (standard 3.8v)
Working current: 220mA @ GSM 850
Peak current: 0.8A

WCDMA: Band 5 : 850Mhz
Maximum Output: GSM/GPRS 850Mhz
Power Class 4
(+33dBm +2.5dBm /-0.5dBm)
Receiving
Sensitivity: GSM850 \leq -106dBm
GPS: GPS Positioning, 1.57542Ghz
Sensitivity: Catch -144dBm, Track -159dBm
Data Speed: GSM CS:UL 9.6kpbs / DL 9.6kpbs
GPRS: Multi-slot Class 10
EDGE: Multi-slot Class 12
WCDMA CS: UL 64kpbs / DL 64kpbs
WCDMA PS: UL 384kpbs / DL 384kpbs
Protocol: HSDPA / WCDMA / EDGE / GPRS / GSM



For more information contact :

 **DATALINK**
TECHNOLOGIES

P: + 61 390249400 www.datalinktech.com.au