



DATALINK
TECHNOLOGIES

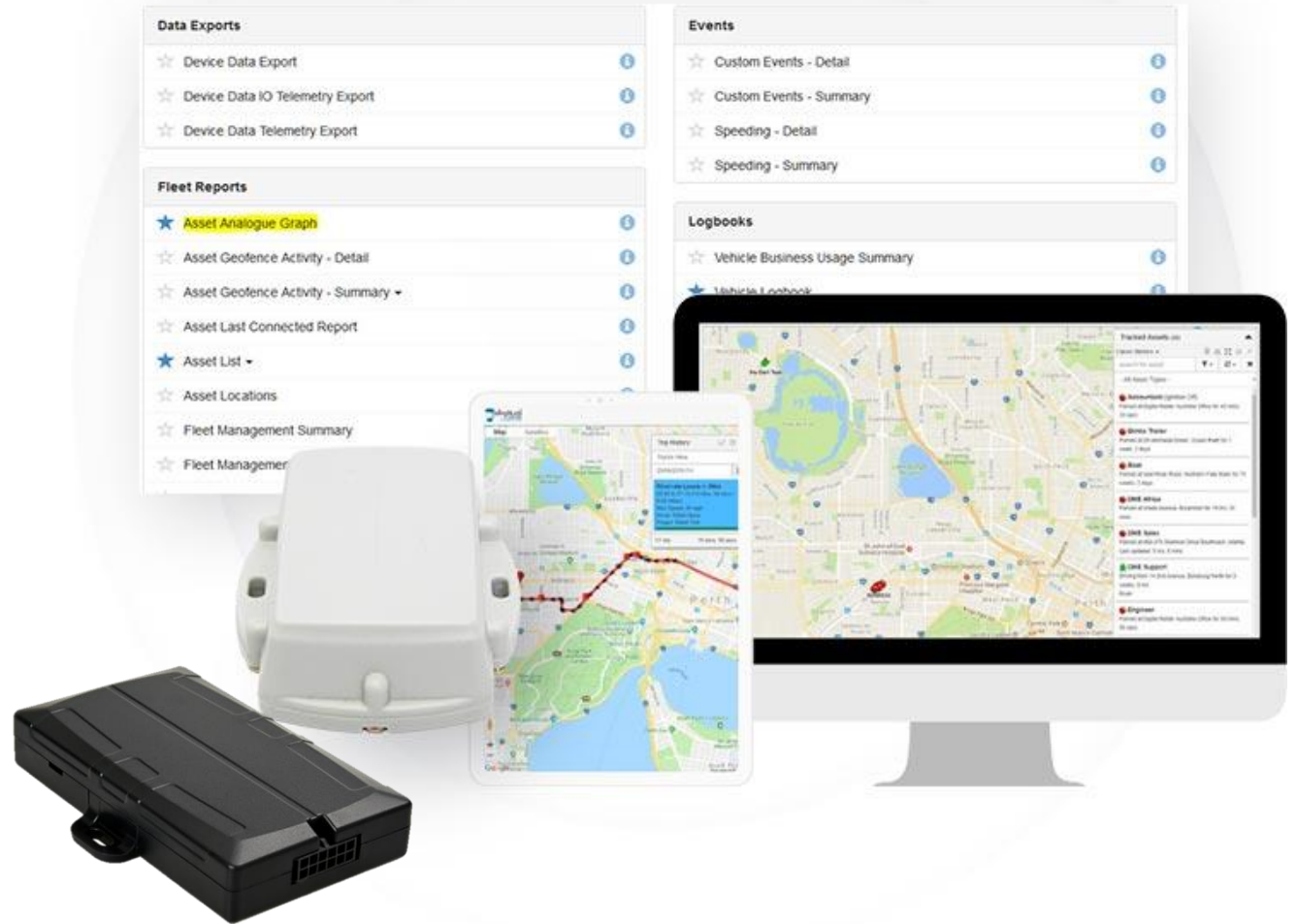
OVERVIEW

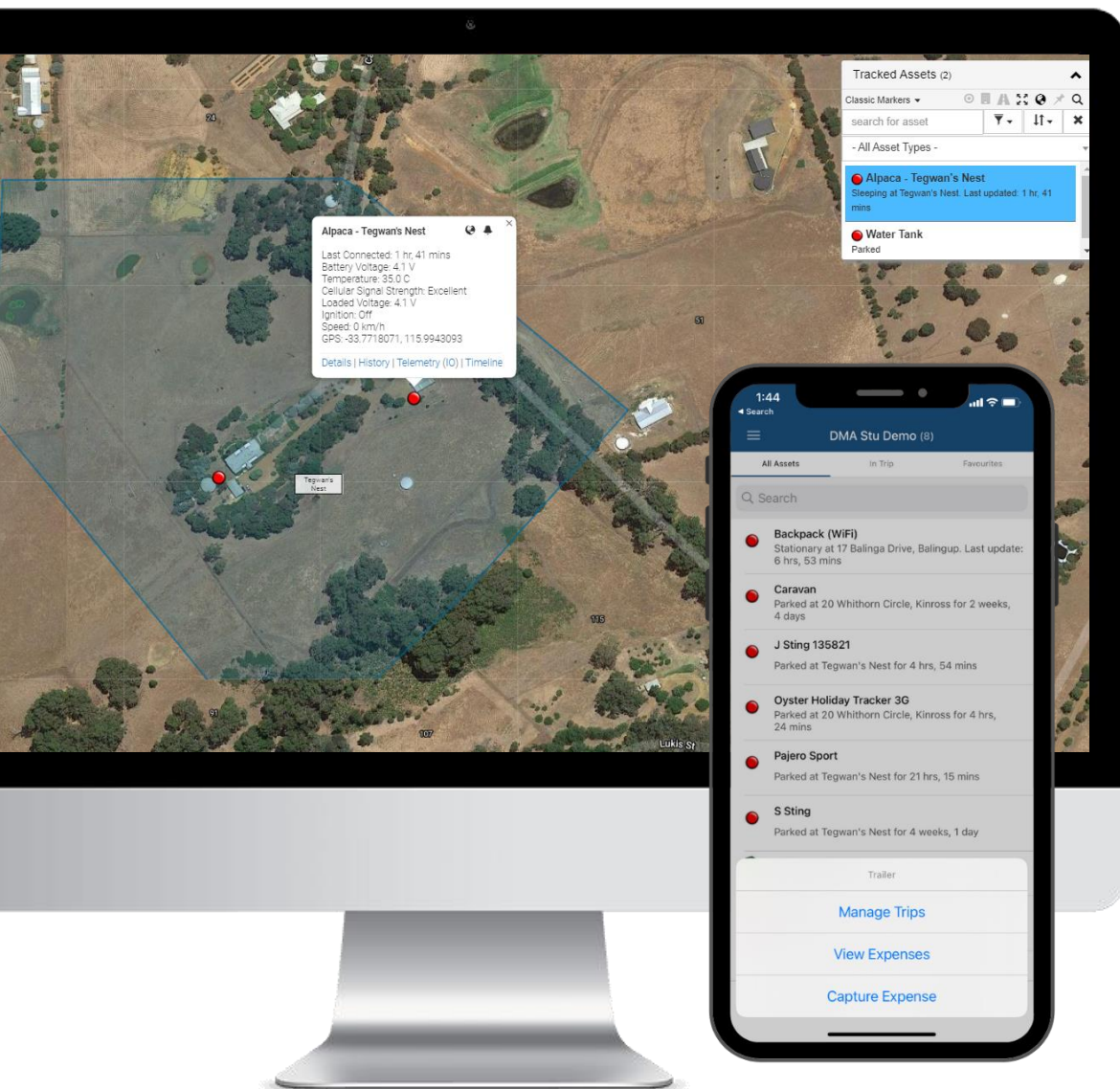
Datalink Asset Management System Tracking Platform

Datalink Asset Management System DAMS

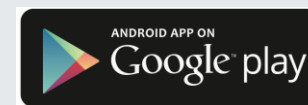
One Platform, Every Asset

Track and manage the assets that power your business with DAMS, our intuitive GPS Tracking Platform featuring Google Maps, powerful customizable reporting and alerts, remote device health monitoring, and more.

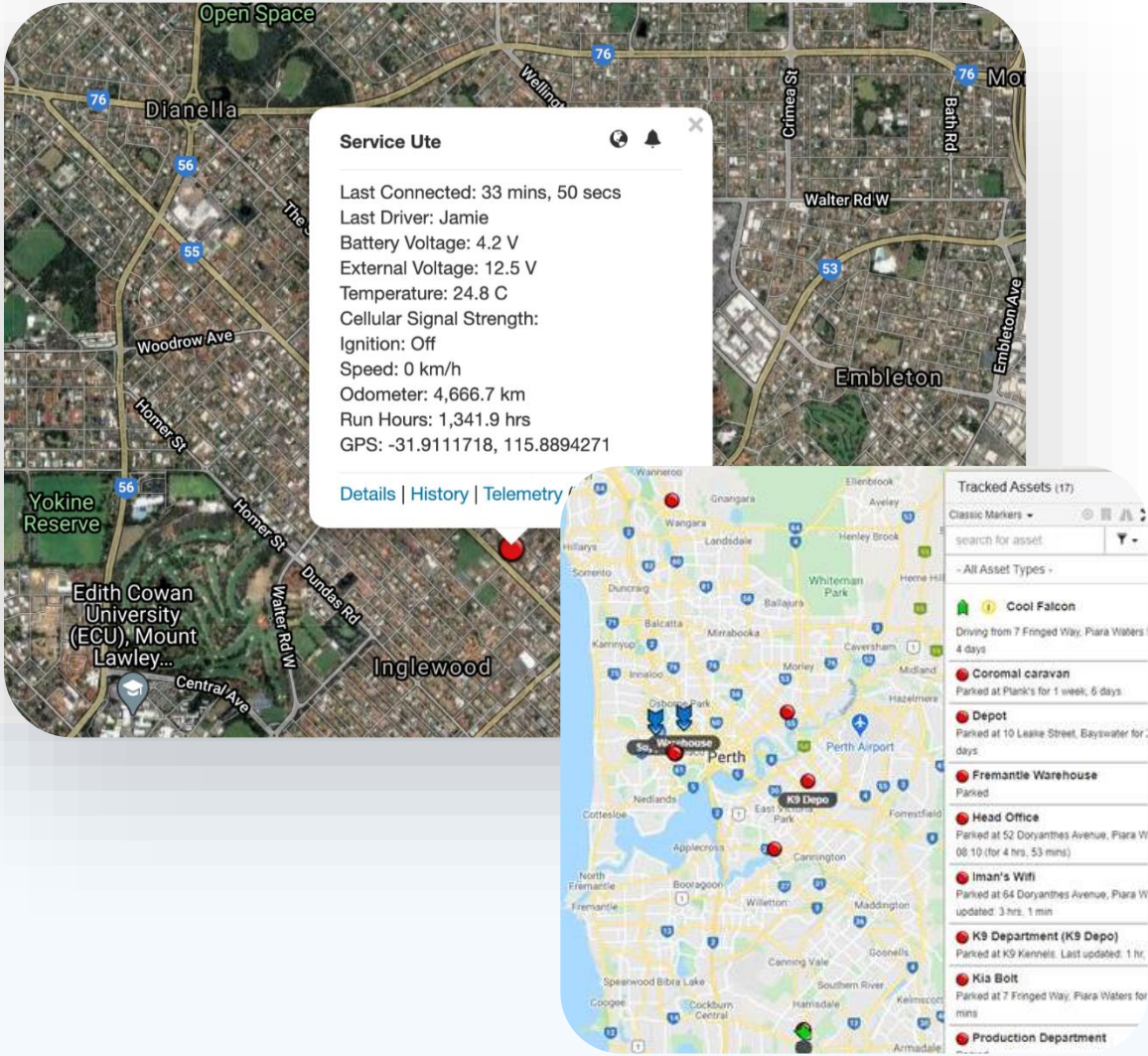




Available on Desktop, Tablet, or Mobile App



Location Tracking & Theft Recovery



Track & Manage Your Assets



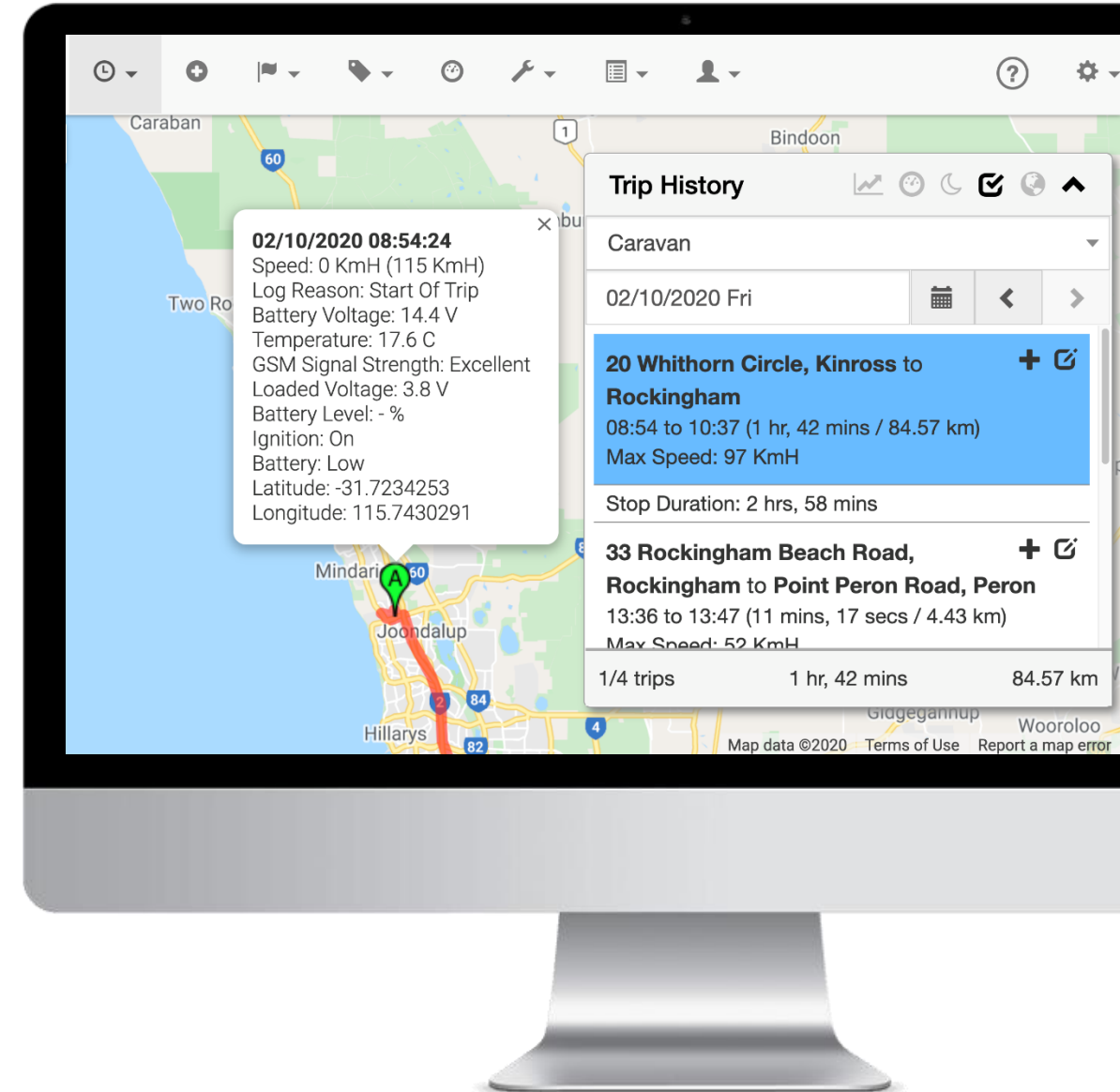
Location Tracking

Locate your assets in Google's Map, Terrain or Satellite Views.



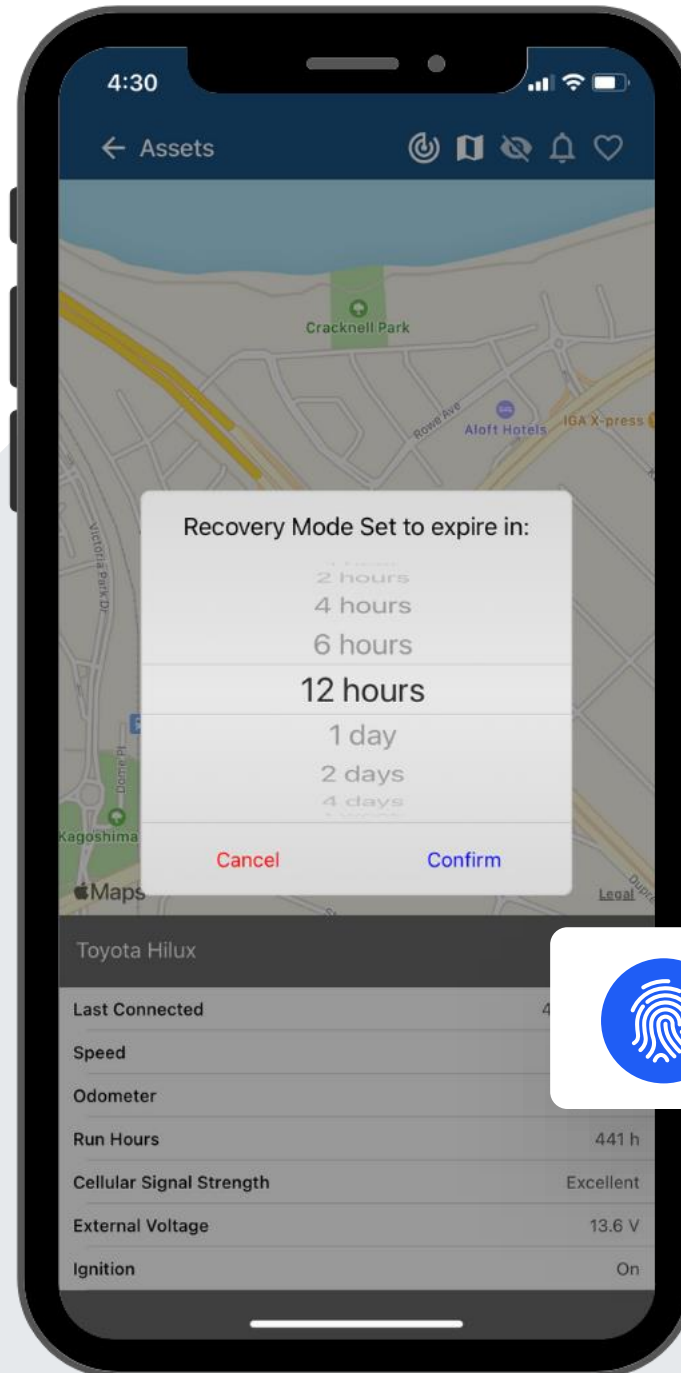
Trip History

Capture and view Historical Trip Data to monitor routes, mileage, idle time, average speed and more.



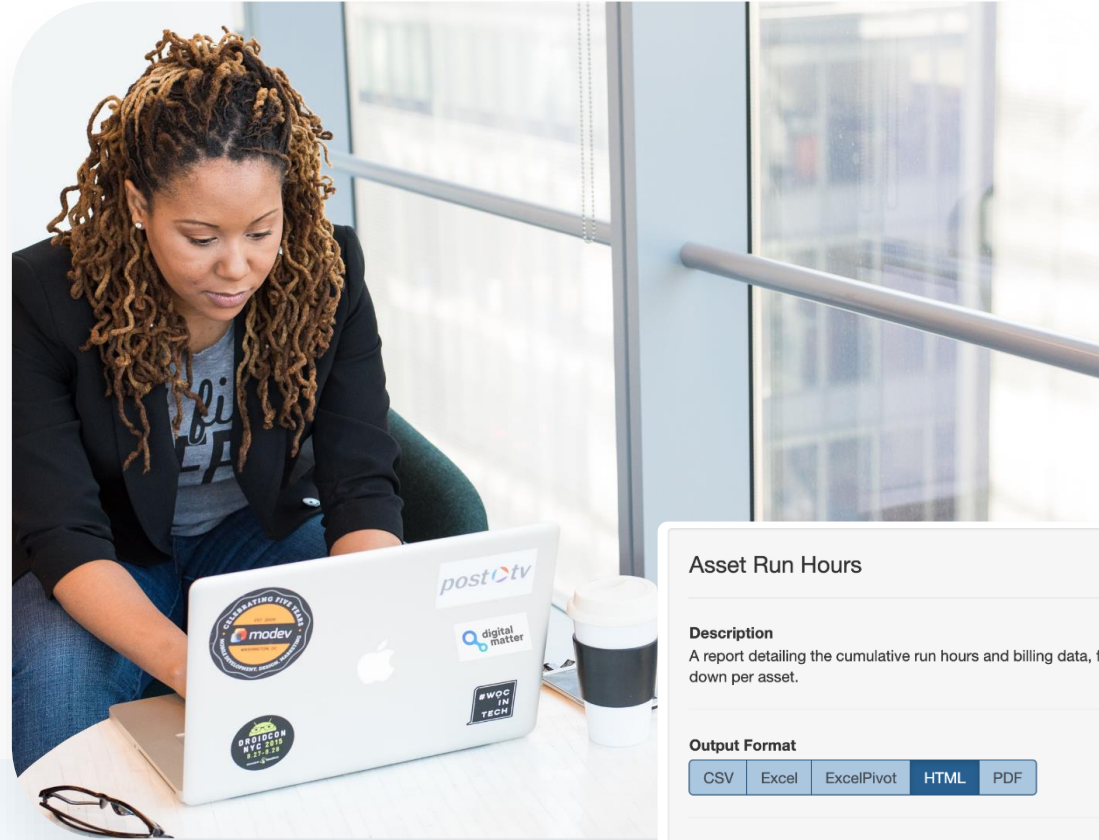
Recover Stolen Property

Quickly switch to **Recovery Mode** to activate real-time tracking in case of loss, theft or unauthorised use.



One-Touch to Recovery

Reporting & Alerts



Asset Run Hours

Description

A report detailing the cumulative run hours and billing data, for a project in a given date range. The report is broken down per asset.

Output Format

CSV Excel ExcelPivot **HTML** PDF

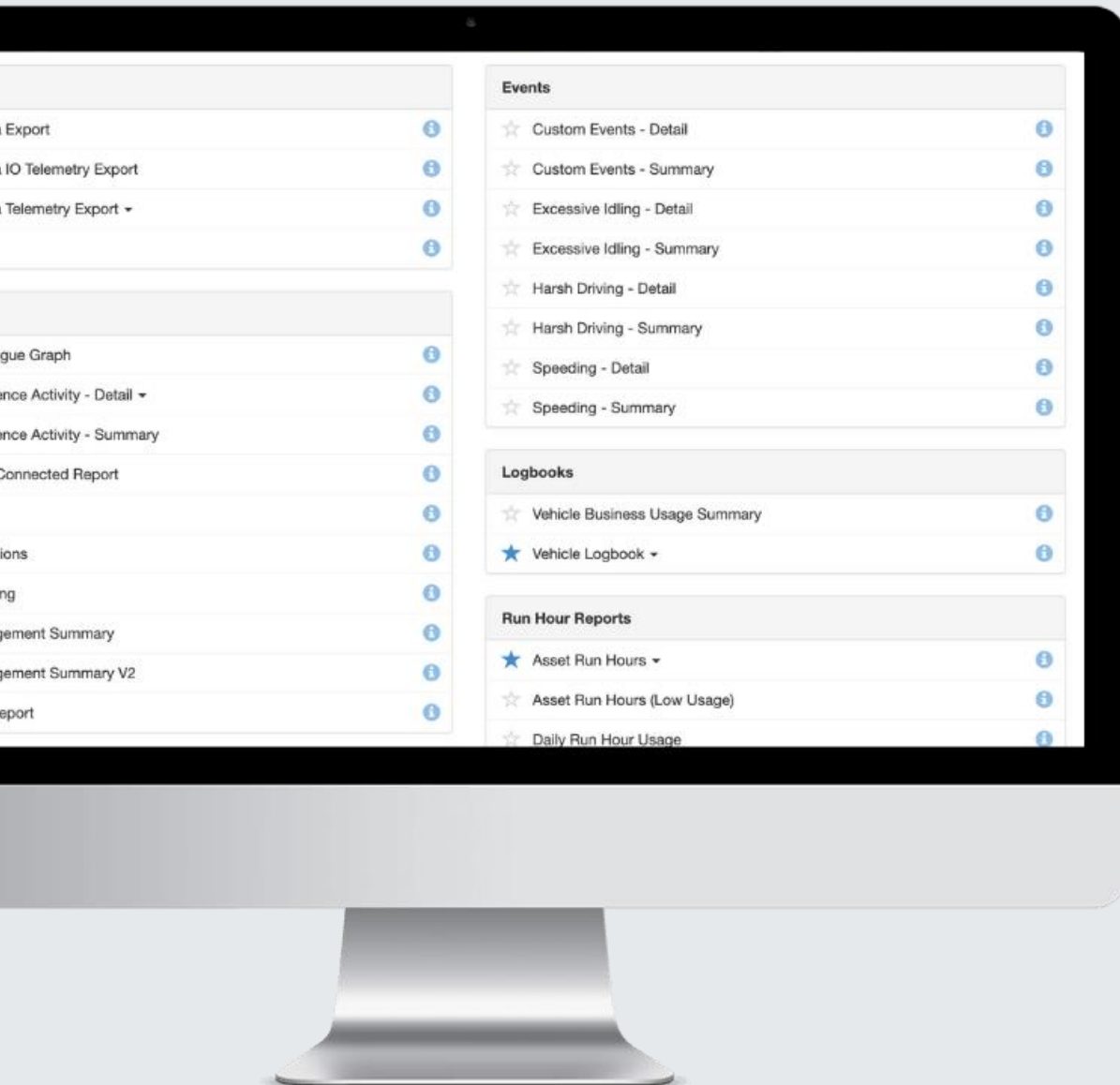
⚙️ Advanced Options ▾

Projects

Leave Blank to Select All Projects / Begin Typing to Select

Departments

Leave Blank to Select All Departments / Begin Typing to Select



Report on What Matters

Explore, customise, schedule and download vital reports for analysis, optimisation and billing.

Select from common reports such as Asset Utilisation, Trip List, Low Battery, and Speeding, or create your own.



Configure Actionable Alerts

Set notifications based on exceptional events and specific asset behaviour.

After Hours Movement



Accident Detected

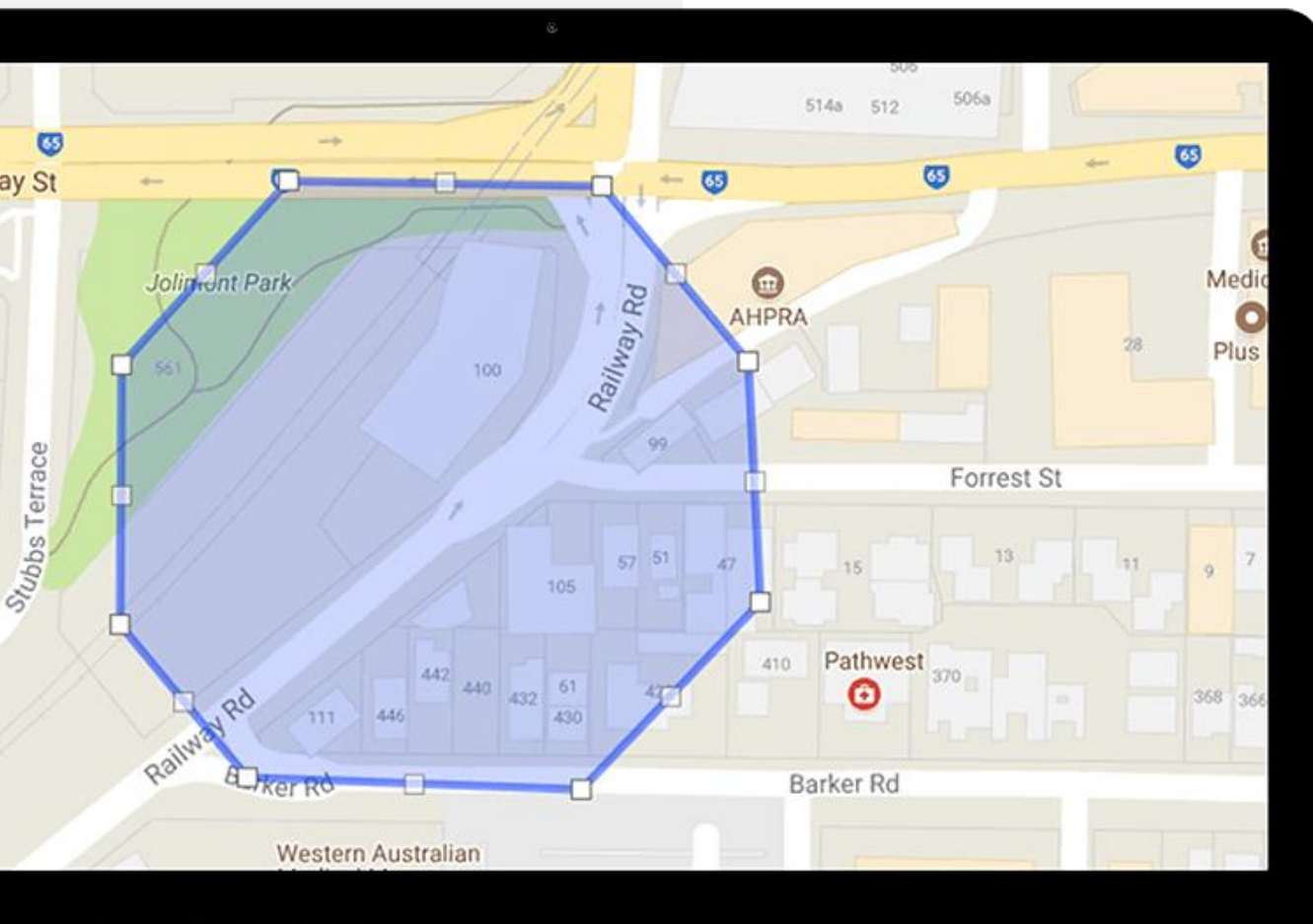


Speeding Alert



The screenshot shows a 'Create Alert Wizard' window with a dropdown menu for 'Type of Alert'. The dropdown is open, displaying a list of alert types. The first option, 'After Hours Usage', is selected and highlighted in grey. The other options in the list are: 'Ignition On', 'Movement Detected', 'Panic / Duress Button Pressed', 'Accident / Rollover Detected', 'Speeding (Once per trip)', 'External Power Removed', 'Low Device Backup Battery Voltage', 'Low External Voltage (Vehicle Battery Voltage)', 'Geo Fence Alert', and 'Remora Low Battery'.

Type of Alert
After Hours Usage
Ignition On
Movement Detected
Panic / Duress Button Pressed
Accident / Rollover Detected
Speeding (Once per trip)
External Power Removed
Low Device Backup Battery Voltage
Low External Voltage (Vehicle Battery Voltage)
Geo Fence Alert
Remora Low Battery



Set Boundaries

- Create “Digital Boundaries” with user-friendly Geofencing tools.
- Quickly bulk upload multiple Geofences with your own longitude, latitude, radius and priority data.
- Configure breach alerts if an asset enters or leaves your boundary.
- Advanced [Geofence Download to Device](#) options also available.



Geofence Alert

Trailer 18 has left your warehouse.

Visualise Asset Utilisation

Qualify asset working time versus idling time.
Understand where, and how your assets are
being used to optimise usage, reduce
downtime, and increase asset's useful life.



Asset Run Hours for All Projects - 01/09/2020 to 23/09/2020							
Asset Type	Asset	Description	Department	Distance (km)	Billable Amount (Distance)	Run Time (hrs)	Billable Amount (Run Time)
Low Value Asset	Senior Hardware Engineer			539.18	0.00	35.29	0.00
Total - Low Value Asset (1)				539.18	0.00	35.29	0.00
Asset Type	Asset	Description	Department	Distance (km)	Billable Amount (Distance)	Run Time (hrs)	Billable Amount (Run Time)
Point of Interest	Depot			0.00	0.00	0.00	0.00
	Fremantle Warehouse			0.00	0.00	0.00	0.00
	Head Office			216.93	0.00	8.42	0.00
	Production Department			0.00	0.00	0.00	0.00
	Sales Dep			0.00	0.00	0.00	0.00
	Service Centre			0.00	0.00	0.00	0.00
Total - Point of Interest (6)				216.93	0.00	8.42	0.00
Asset Type	Asset	Description	Department	Distance (km)	Billable Amount (Distance)	Run Time (hrs)	Billable Amount (Run Time)
Pump	Pump (Airbnb)			0.00	0.00	0.00	0.00
Total - Pump (1)				0.00	0.00	0.00	0.00
Asset Type	Asset	Description	Department	Distance (km)	Billable Amount (Distance)	Run Time (hrs)	Billable Amount (Run Time)
Temp Sensor	Cool Falcon			508.91	0.00	117.54	0.00
Total - Temp Sensor (1)				508.91	0.00	117.54	0.00
Asset Type	Asset	Description	Department	Distance	Billable Amount	Run Time	Billable Amount (Run Time)

Schedule Preventative Maintenance & Job Reminders

Avoid costly repairs and reduce equipment and vehicle downtime with timely Maintenance Alerts and Job Reminders based on time, distance travelled, or run hours.

10km

6mth


50hr

Create Maintenance Schedule

The Maintenance Schedule dictates **when** the next maintenance job will be actioned. Not all the conditions are required. A **combination of criteria** (Odometer, Run Hours, Secondary Run Hours and Calendar) can be used. Whichever of the **first** will result in a maintenance job being created for the asset.

☐ Secondary Unit Maintenance 

☒ Odometer

☒ Use Absolute Value 

Action Interval (kms)

15000

Reminder Notice Period (kms before action) (optional)

2000

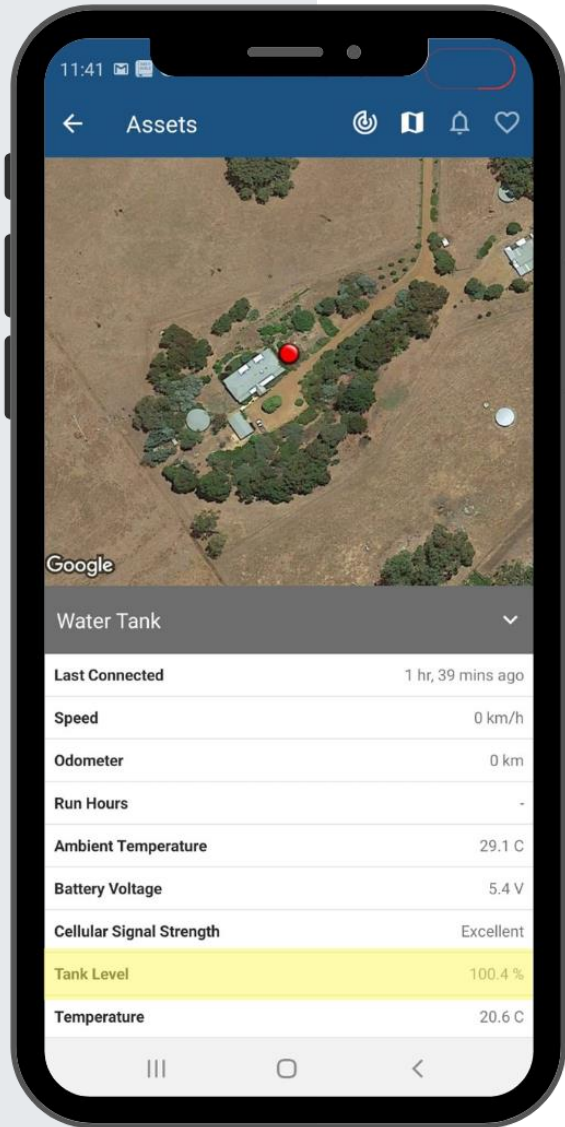
☐ Run Hours

☐ Calendar



Maintenance Alert

3k Oil Change Company Van 18
Safety Inspection – Check Tyres



Monitor Sensor Data

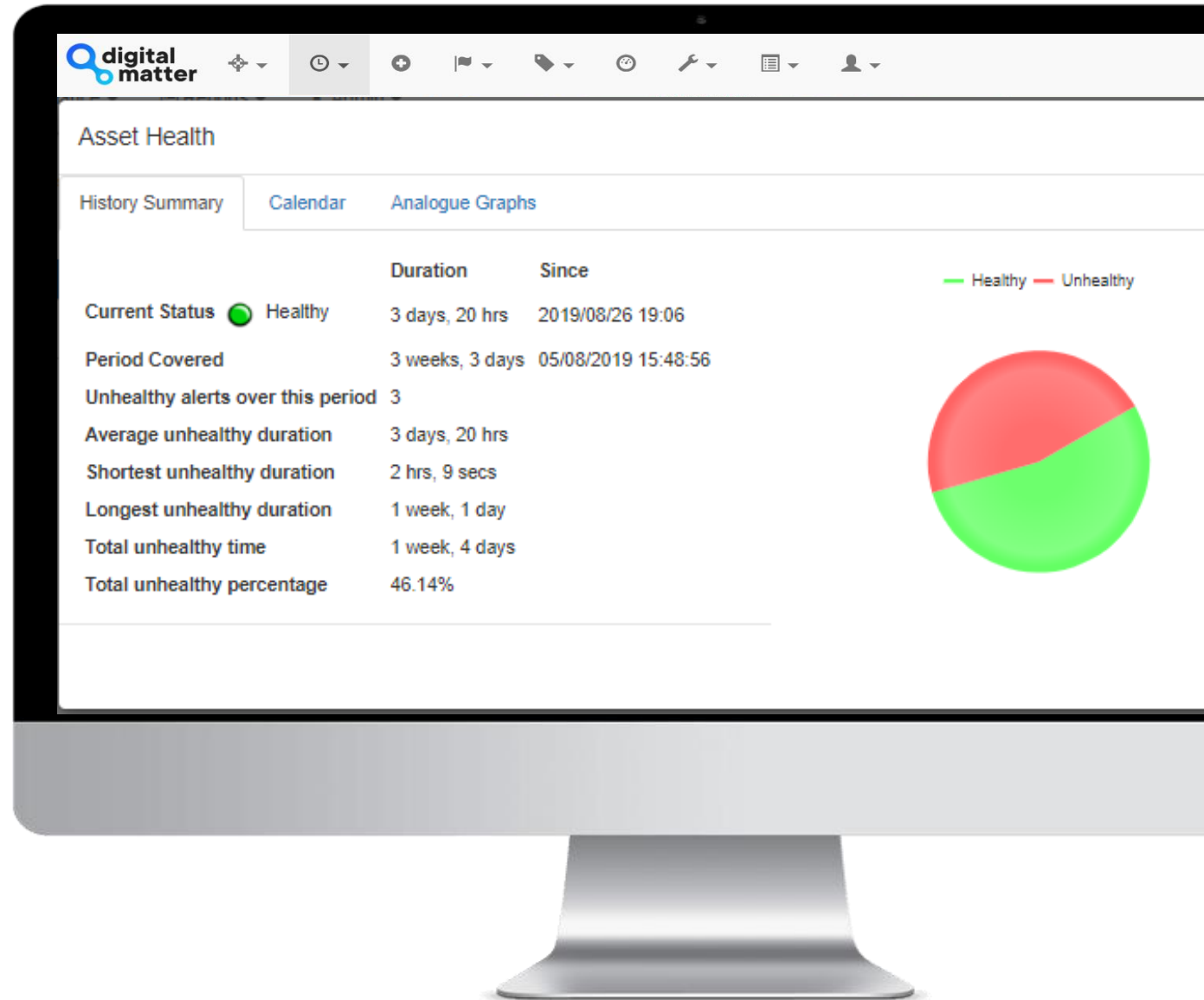
Report on integrated sensor data such as temperature, humidity, tank levels, door open/close, and more.



Tank Level: 96.8%

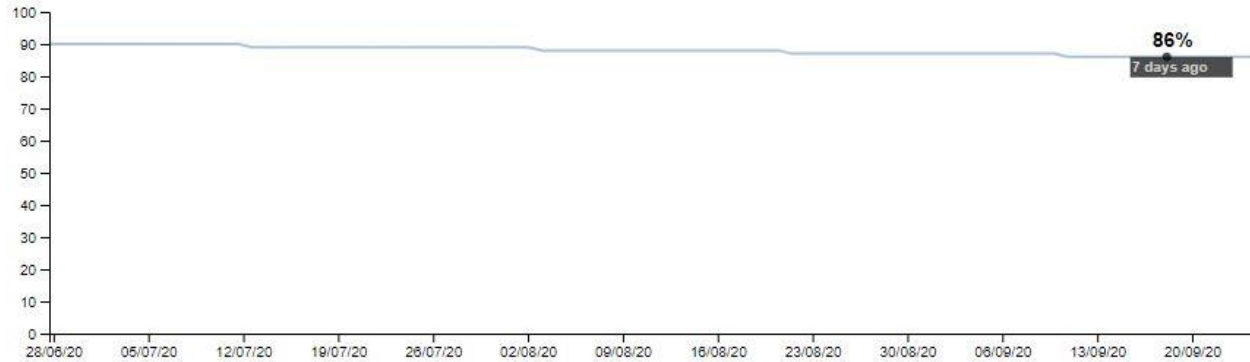
Configure & Manage Asset Health

See “healthy” and “unhealthy” assets at a glance based on sensor data and user-defined events or behaviour, such as temperature changes, tank levels, humidity, pressure, and more.



Battery Management: Head Office (237782)

Battery Percentage (%)



Device Counter Date: 18/09/2020 03:13 (7 days ago)

Avg. Time to First Fix: 10.779 seconds

GPS Fix Time (successful/failed): 00:10:33:28 / 00:00:26:00

GPS Fixes (successful/failed): 3526 / 26

Uptime: 46 weeks, 11 hrs

Accelerometer Wakeups: 549

Upload Time (successful/failed): 00:15:15:16 / 00:00:35:00

Uploads (successful/failed): 4357 / 9



Low Battery Alert

60 Days Remaining

Monitor Battery Life & Usage

Ensure your assets are never left unprotected due to dead batteries with accurate battery life monitoring, remaining life predictions, and low battery alerts.

* Applicable to our [battery-powered devices](#) only.

Monitor Driver Behaviour

Monitor speeding, harsh acceleration, braking and cornering, idle times and more to improve driver safety and prevent unnecessary wear on vehicles.



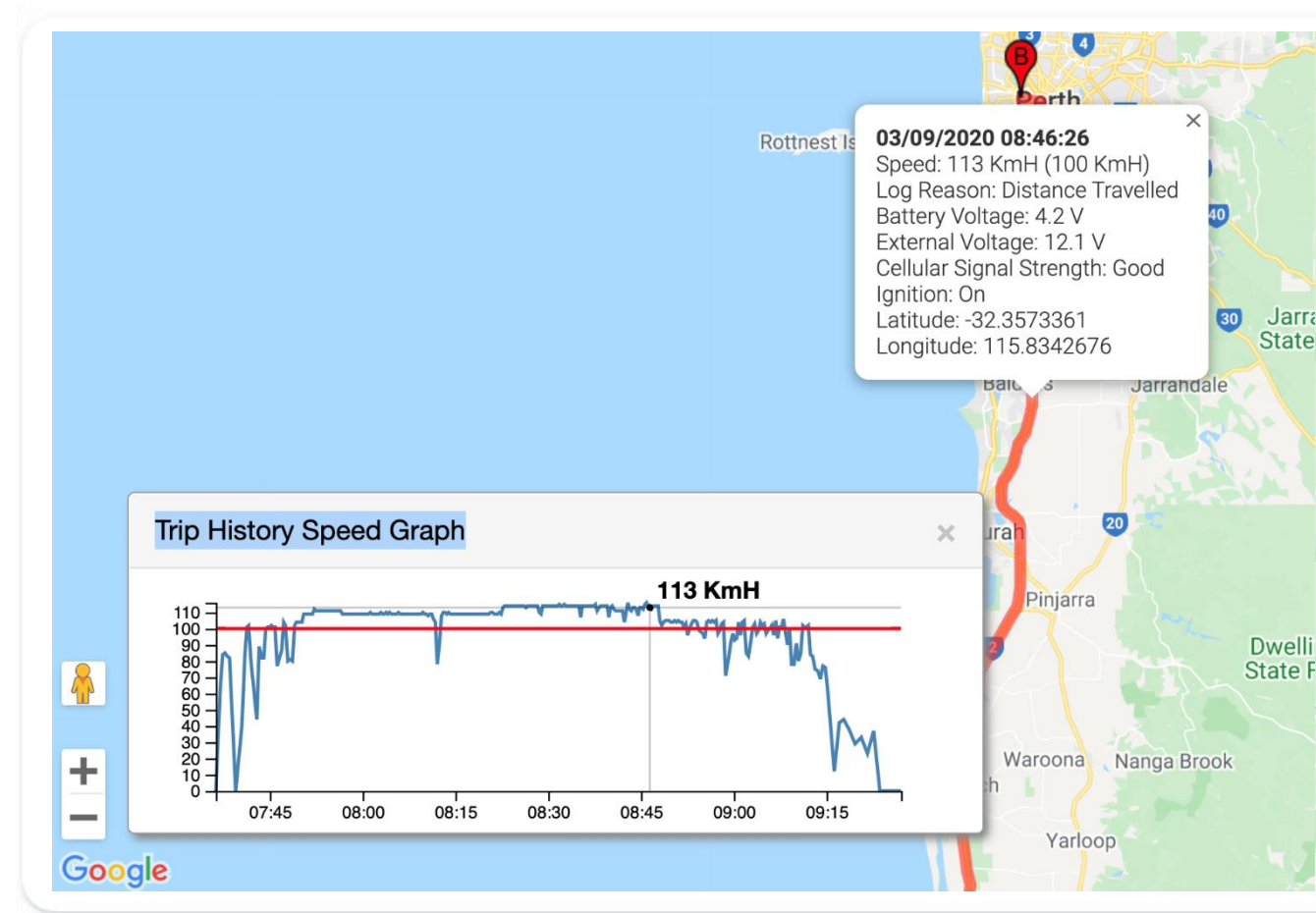
Excessive Idling



Accident Alert

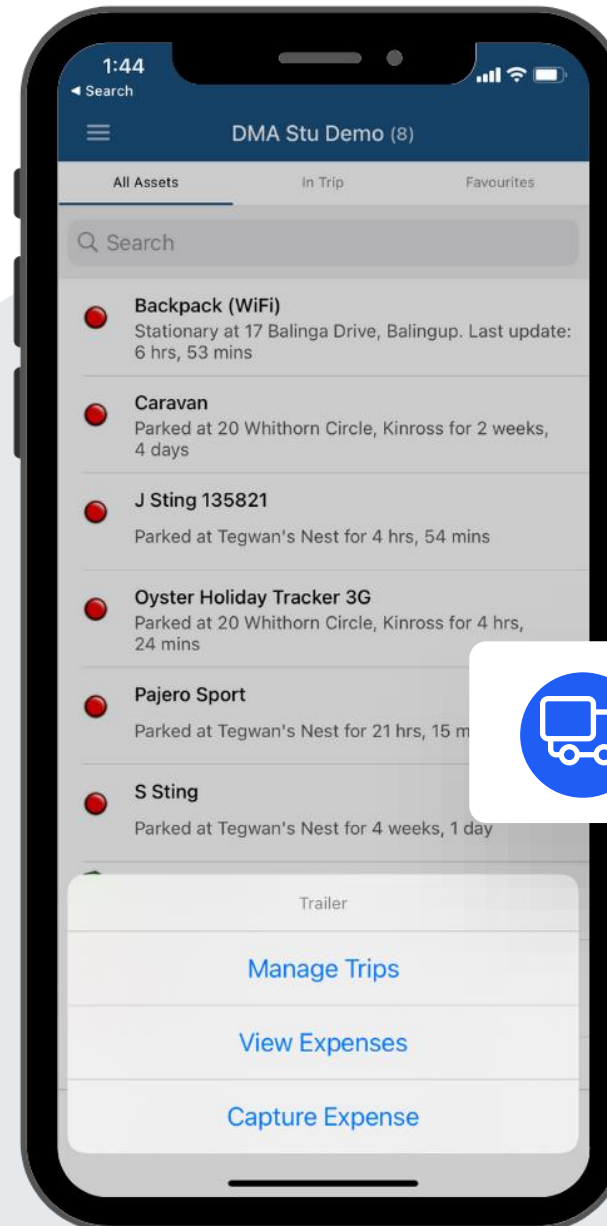


Speeding Alert

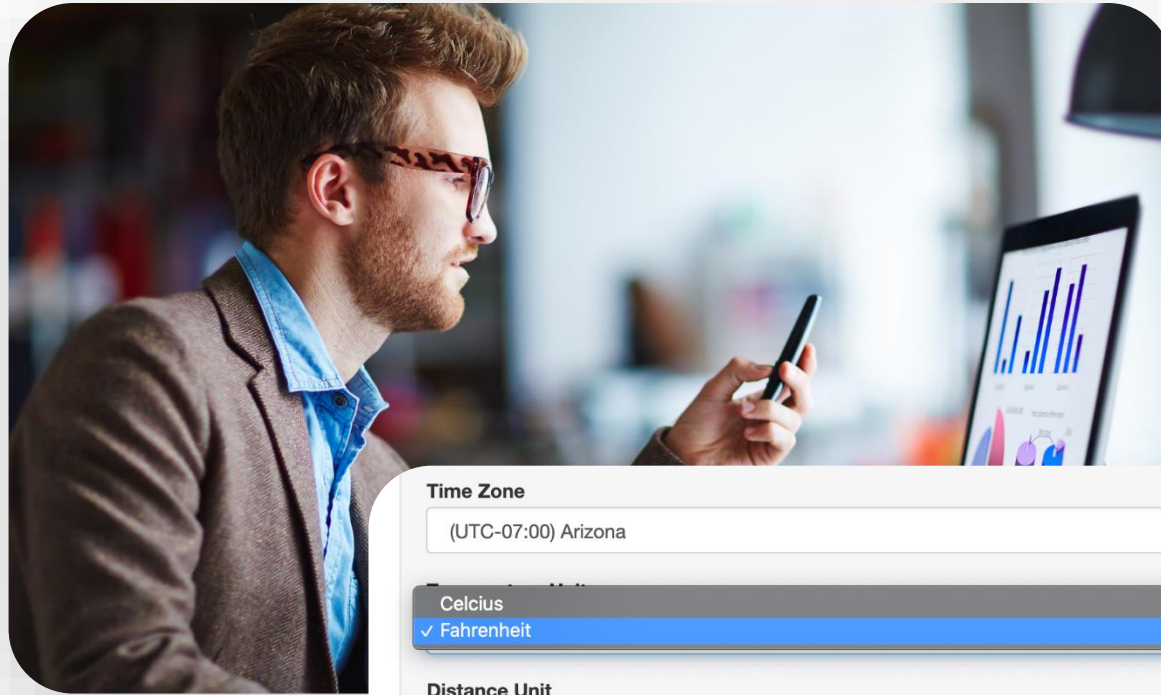


Capture Expenses

View all trips and easily mark as “Business” or “Private” to streamline **Log booking**, **Fringe Benefit Tax (FBT)** and **Road User Charge** reporting. Provide proof of service for accountability and invoicing.



Flexibility & Control



Time Zone

(UTC-07:00) Arizona

Temperature Unit

Celcius

✓ Fahrenheit

Distance Unit

KM

Date Format

dd/mm/yyyy

Group Separator

Comma (,)

Decimal Separator

Point (.)

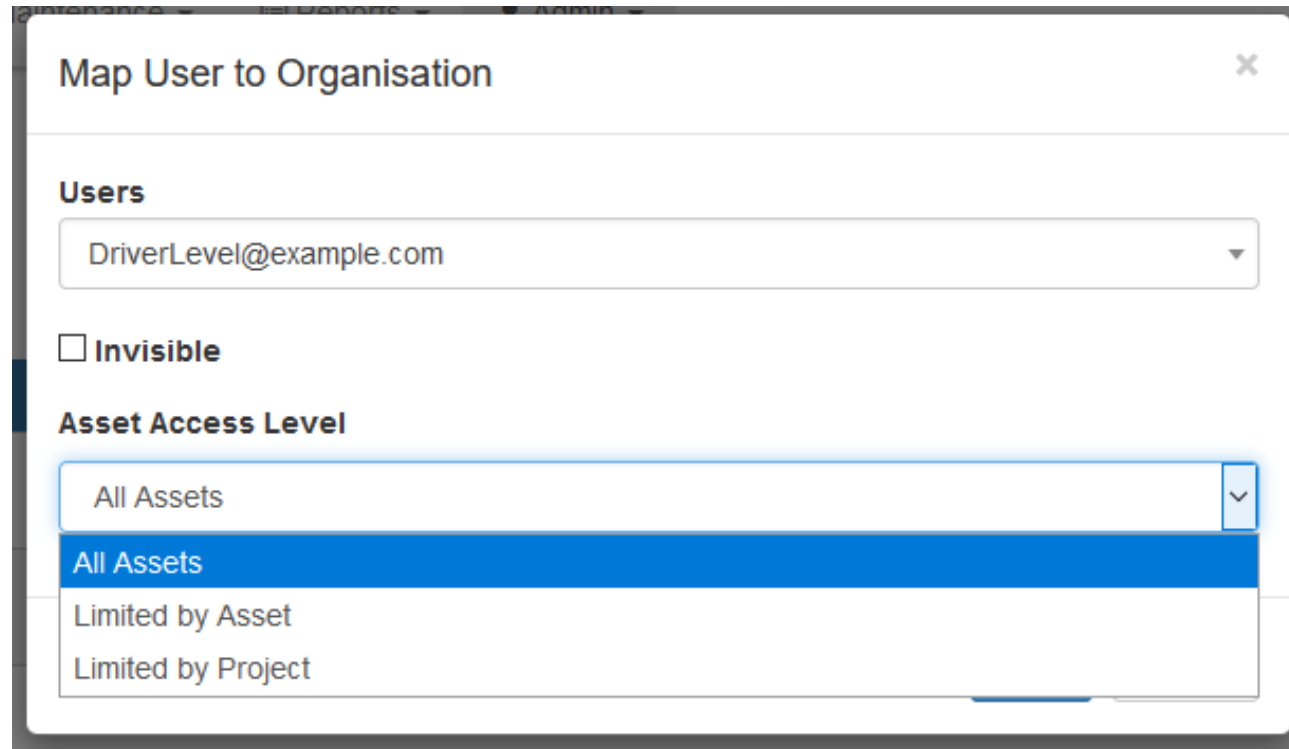
Duress Alert ⓘ

Sad Trombone

▶ Play

Manage Users & Permissions

- Quickly add and invite new users.
- Create and assign User Roles.
- Manage permissions and control user access to specific features, reports and assets.
- Set up Partner or Subsidiary Organisations.



The screenshot shows a web application interface for mapping a user to an organization. The dialog box is titled "Map User to Organisation" and has a close button (X) in the top right corner. It contains the following elements:

- Users:** A dropdown menu showing "DriverLevel@example.com".
- Invisible:** A checkbox that is currently unchecked.
- Asset Access Level:** A dropdown menu with a blue highlight on the "All Assets" option. The menu is open, showing the following options:
 - All Assets (highlighted)
 - Limited by Asset
 - Limited by Project

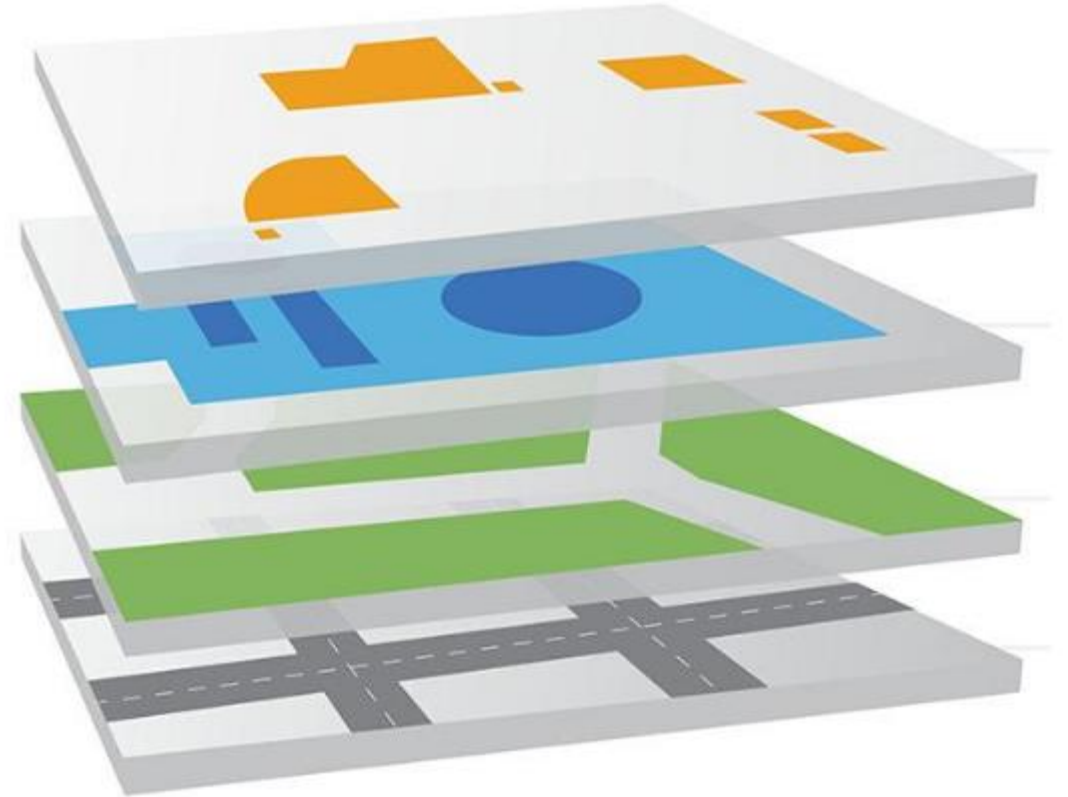
Add Custom Map Overlays

Integrate your own custom map overlays to view your assets over timely aerial images.

Custom Map Overlays are particularly beneficial for Construction, Oil and Gas, and Mining sites, as satellite data over these locations may be outdated.

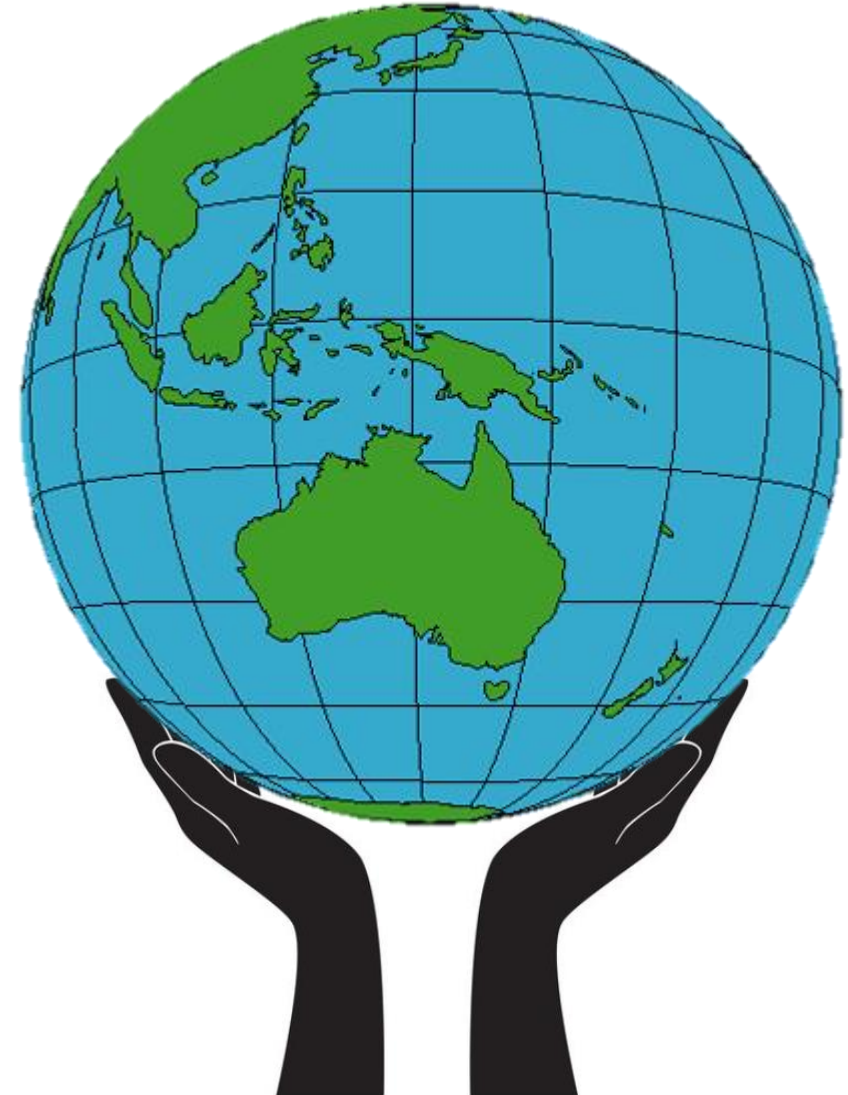


Did you know: Satellite data on Google Maps is typically 1 - 3 years old? Google Earth gathers data from various satellite and aerial photography sources, and it can take months to process, compare and set up the data before it appears on Google Maps.



Global Support

Derive maximum value from DAMS by exploring our knowledge base of over **600 support articles** or speak directly with our team of support engineers for guidance.



Let's Talk Tracking

Get the technology, tools, and support you need to grow your business.

Contact Details

Phone – 1300 669641

Email – sales@datalinktech.com.au

Website – www.datalinktech.com.au